

Click on the Title of any Page to return to the Cover Page

Use thumbnails to select only the pages you want to print.

Basic Fingering Charts

for Wind Instruments

Jim Evans

Select your instrument:

Flute

Trumpet

Oboe

Horn in F

Clarinet

Trombone

Alto Clarinet

Baritone B.C.

Bass Clarinet

Baritone T.C.

Alto Saxophone

Tuba

Tenor Saxophone

Baritone Saxophone

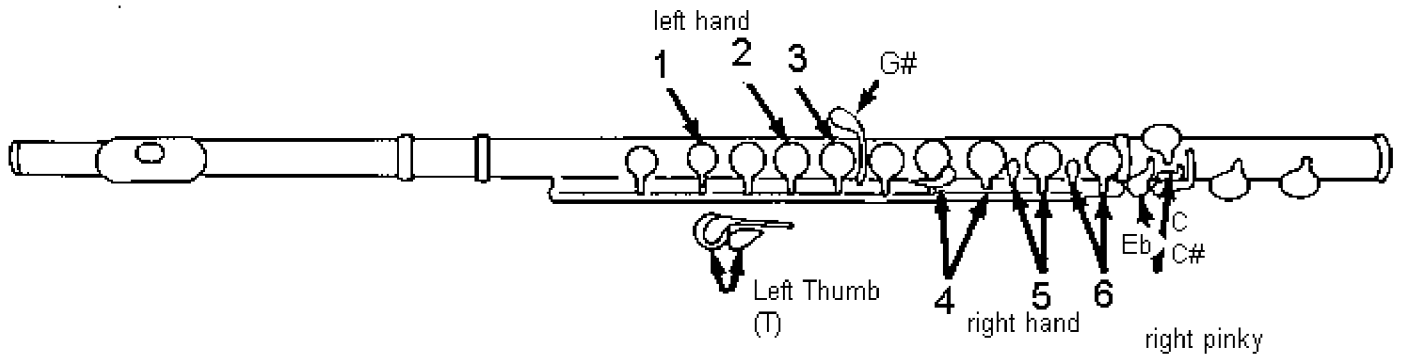
Bassoon

bandfolio.com

Music Education Resources

Basic Fingering Chart

Memorize all notes, fingerings, and staff positions on this page



A



1 2 ---- Eb
T

A# Bb



1 -- 4 -- -- Eb
T

C



1 ---- -- -- Eb

D



- 2 3 4 5 6
T

D# Eb



- 2 3 4 5 6 Eb
T

F



1 2 3 4 -- -- Eb
T

G



1 2 3 ---- Eb
T

G# Ab



1 2 3 G# ---- Eb
T

A



1 2 ---- -- -- Eb
T

A# Bb

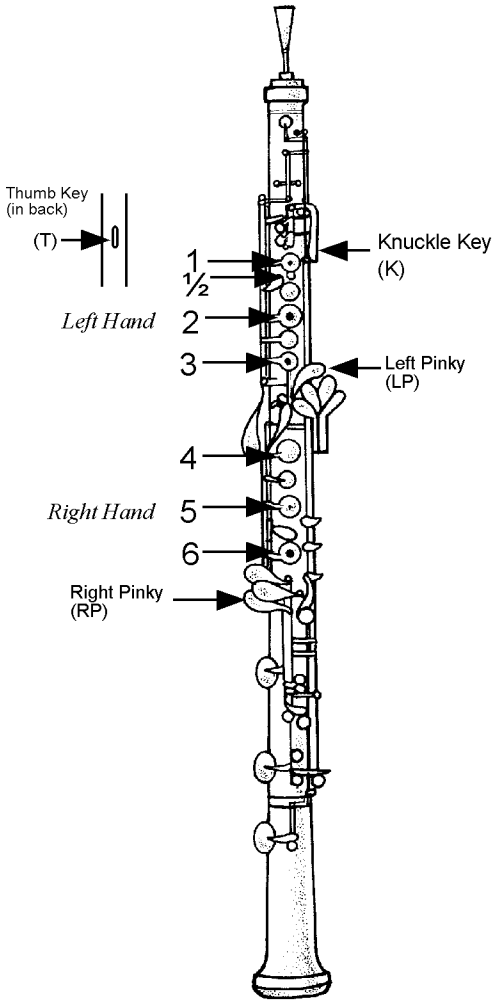


1 -- 4 -- -- Eb
T

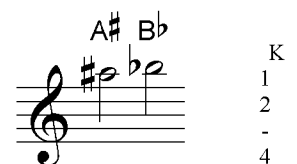
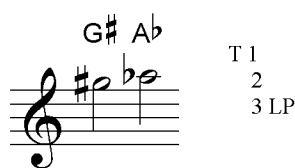
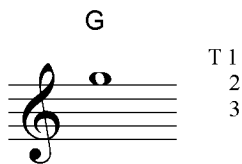
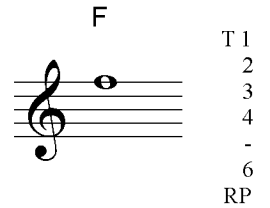
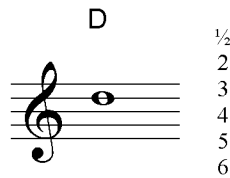
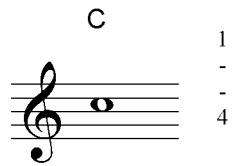
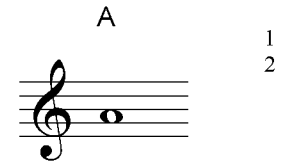
Oboe

Basic Fingering Chart

Memorize all notes, fingerings, and staff positions on this page



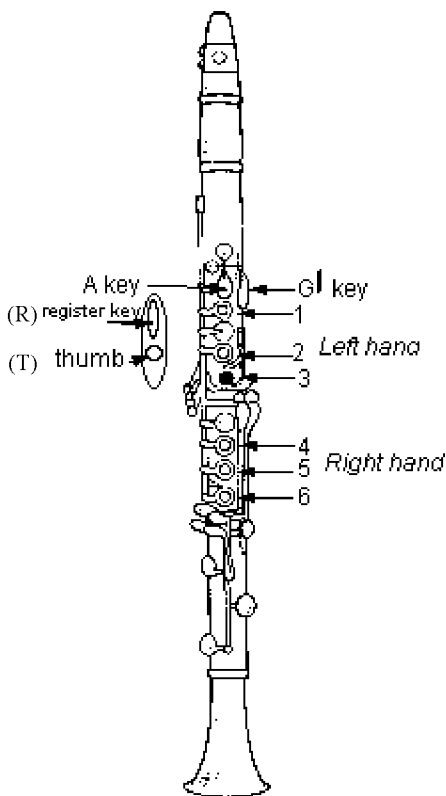
For 1/2 hole fingerings, slide the first finger down to uncover the vent hole.



Clarinet

Basic Fingering Chart

Memorize all notes, fingerings, and staff positions on this page



B

T 1
2
3
-
5

C

T 1
2
3

D

T 1
2

E

T 1

F

T

G

open

A

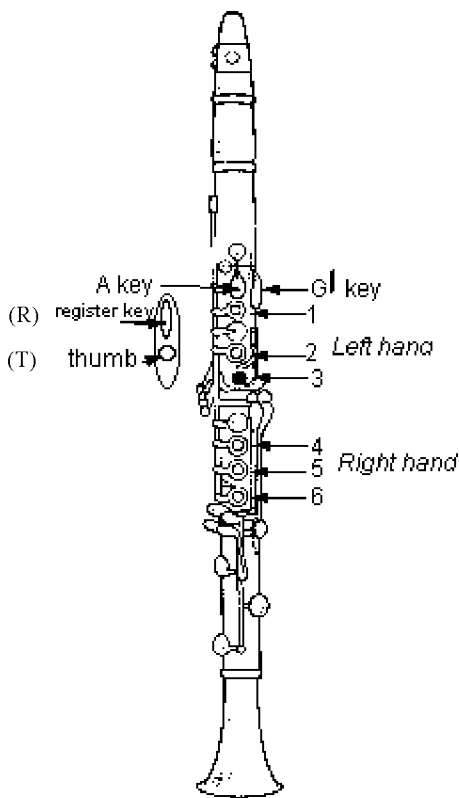
A

A# Bb

RA

Basic Fingering Chart

Memorize all notes, fingerings, and staff positions on this page



F# Gb

Musical notation for the notes F# and Gb. The notes are shown on a treble clef staff. To the right of the notes is a vertical list of fingerings: T 1, 2, 3, 4, 5, 6 F#.

G

Musical notation for the note G on a treble clef staff. To the right is a vertical list of fingerings: T 1, 2, 3, 4, 5, 6.

A

Musical notation for the note A on a treble clef staff. To the right is a vertical list of fingerings: T 1, 2, 3, 4, 5.

B

Musical notation for the note B on a treble clef staff. To the right is a vertical list of fingerings: T 1, 2, 3, 5.

C

Musical notation for the note C on a treble clef staff. To the right is a vertical list of fingerings: T 1, 2, 3.

D

Musical notation for the note D on a treble clef staff. To the right is a vertical list of fingerings: T 1, 2.

E

Musical notation for the note E on a treble clef staff. To the right is a vertical list of fingerings: T 1.

F

Musical notation for the note F on a treble clef staff. To the right is a vertical list of fingerings: T.

F# Gb

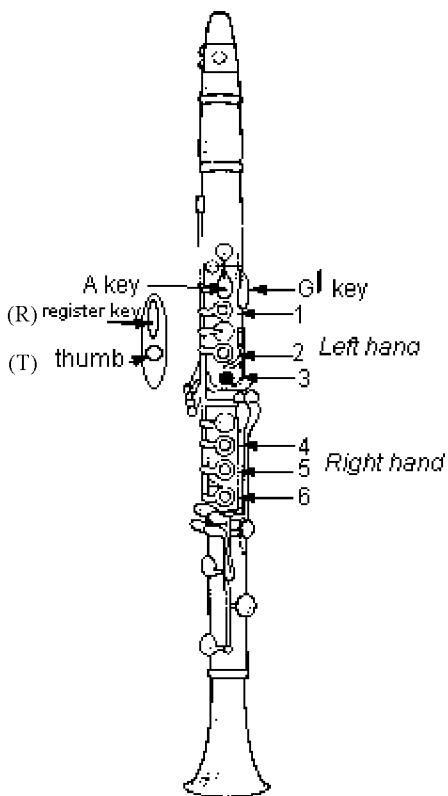
Musical notation for the notes F# and Gb on a treble clef staff. To the right is a vertical list of fingerings: 1.

G

Musical notation for the note G on a treble clef staff. To the right is a vertical list of fingerings: open.

Basic Fingering Chart

Memorize all notes, fingerings, and staff positions on this page



B

T	1
	2
	3
	-
	5

C

T	1
	2
	3

D

T	1
	2

E

T	1
---	---

F

T	
---	--

G

open

A

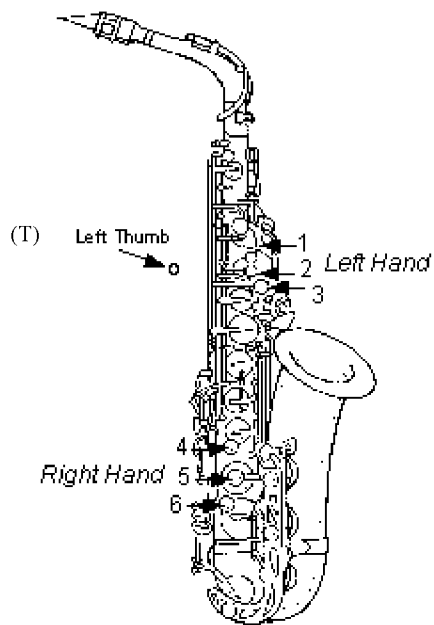
A	
---	--

A# Bb

R	A
---	---

Basic Fingering Chart

Memorize all notes, fingerings, and staff positions on this page



F# Gb

G

A

B

C

D

E

F

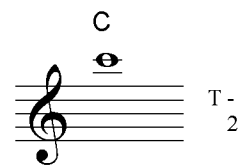
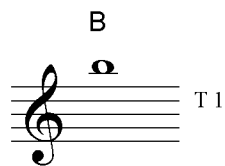
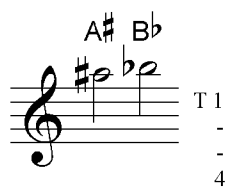
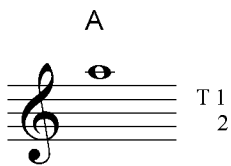
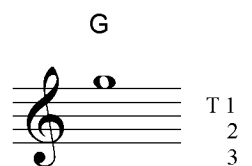
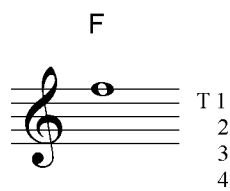
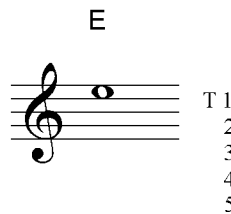
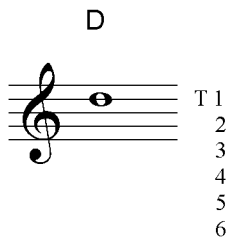
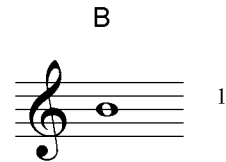
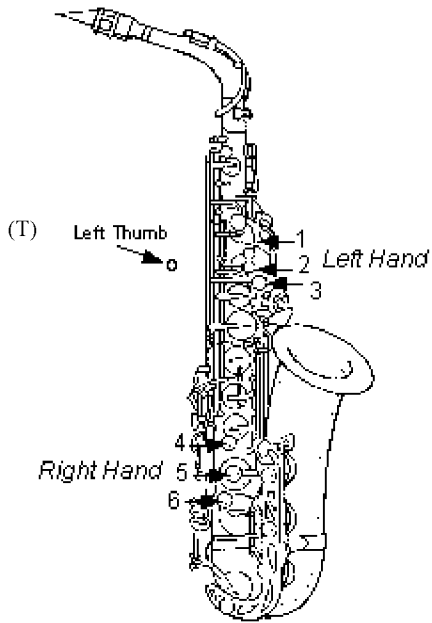
F# Gb

G

Tenor Saxophone

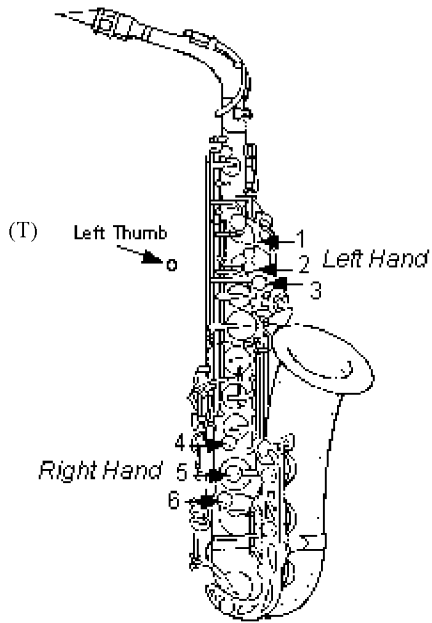
Basic Fingering Chart

Memorize all notes, fingerings, and staff positions on this page



Basic Fingering Chart

Memorize all notes, fingerings, and staff positions on this page



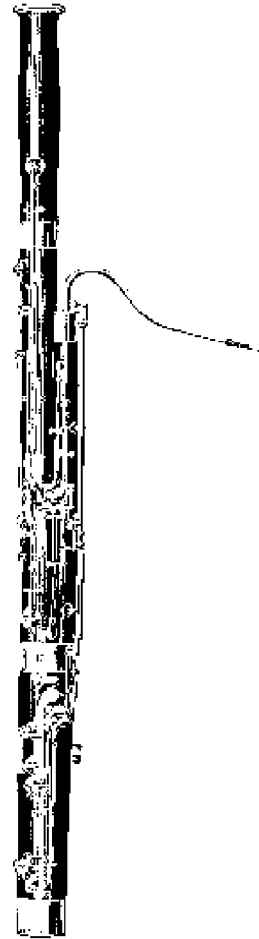
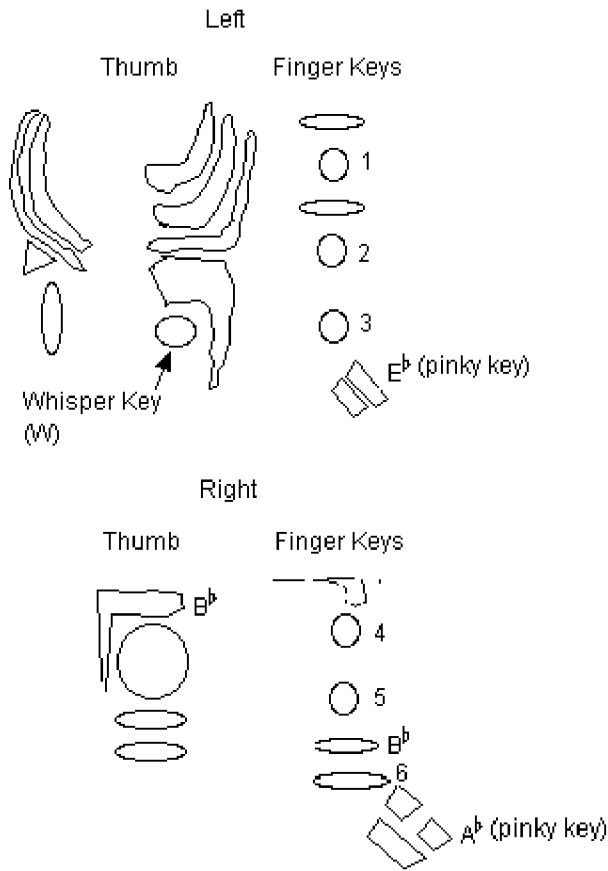
F# Gb

A musical staff in treble clef showing two notes: F# (first line) and Gb (first space). To the right of the staff, fingerings are listed: 1 for F#, 2 for Gb, 3 for F#, a dash for Gb, and 5 for F#.

<p>G</p> <p>1 2 3</p>	<p>A</p> <p>1 2</p>	<p>B</p> <p>1</p>	<p>C</p> <p>2</p>	<p>D</p> <p>T 1 2 3 4 5 6</p>
<p>E</p> <p>T 1 2 3 4 5</p>	<p>F</p> <p>T 1 2 3 4</p>	<p>F# Gb</p> <p>T 1 2 3 - 5</p>	<p>G</p> <p>T 1 2 3</p>	

Basic Fingering Chart

Memorize all notes, fingerings, and staff positions on this page



A

W	1
	2
	3
	4
	5

A[#] B^b

W	1
	2
	3
	4
	5
	B ^b

C

W	1
	2
	3

D

W	1
	2

D[#] E^b

W	1
	-
	E ^b 3
	B ^b -
	5

F

W	
---	--

G

W	1/2
	2
	3
	4
	5
	6

G[#] A^b

W	1/2
	2
	3
	4
	5
	6
	A ^b

A

1
2
3
4
5

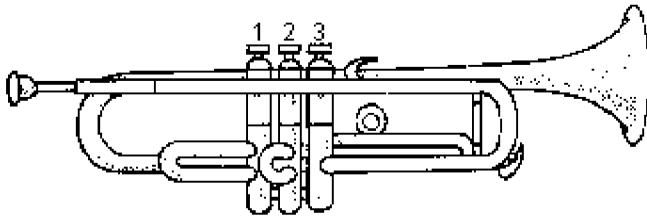
A[#] B^b

1
2
B ^b 3

For 1/2 hole fingerings, cover half of the hole with your finger.

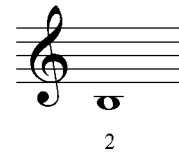
Basic Fingering Chart

Memorize all notes, fingerings, and staff positions on this page



Press down the valves that match the numbers shown
Open means all valves are up.

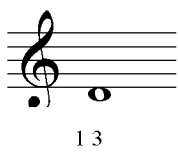
B



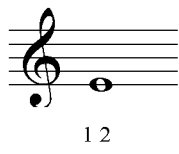
C



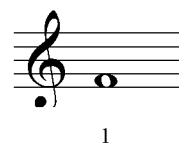
D



E



F



G



A



A# Bb



B



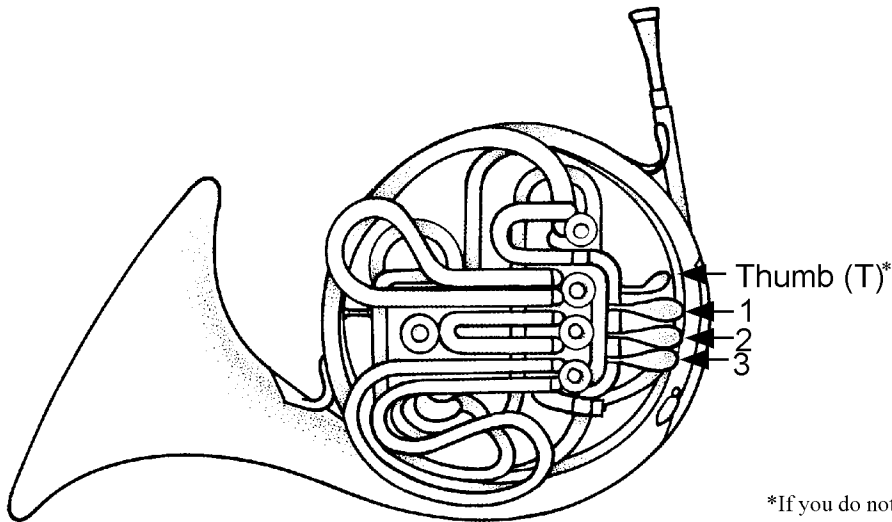
C



Horn in F

Basic Fingering Chart

Memorize all notes, fingerings, and staff positions on this page



*If you do not have a thumb key, just use the valves indicated.

A# Bb

1

Musical notation for the notes A# and Bb on a treble clef staff. The notes are quarter notes. Below the staff is the number '1'.

C

open

Musical notation for the note C on a treble clef staff. The note is a whole note. Below the staff is the word 'open'.

D

1

Musical notation for the note D on a treble clef staff. The note is a whole note. Below the staff is the number '1'.

D# Eb

2

Musical notation for the notes D# and Eb on a treble clef staff. The notes are quarter notes. Below the staff is the number '2'.

E

open

Musical notation for the note E on a treble clef staff. The note is a whole note. Below the staff is the word 'open'.

F

1

Musical notation for the note F on a treble clef staff. The note is a whole note. Below the staff is the number '1'.

G

open

Musical notation for the note G on a treble clef staff. The note is a whole note. Below the staff is the word 'open'.

A

T 1 2

Musical notation for the note A on a treble clef staff. The note is a whole note. Below the staff is the text 'T 1 2'.

A# Bb

T 1

Musical notation for the notes A# and Bb on a treble clef staff. The notes are quarter notes. Below the staff is the text 'T 1'.

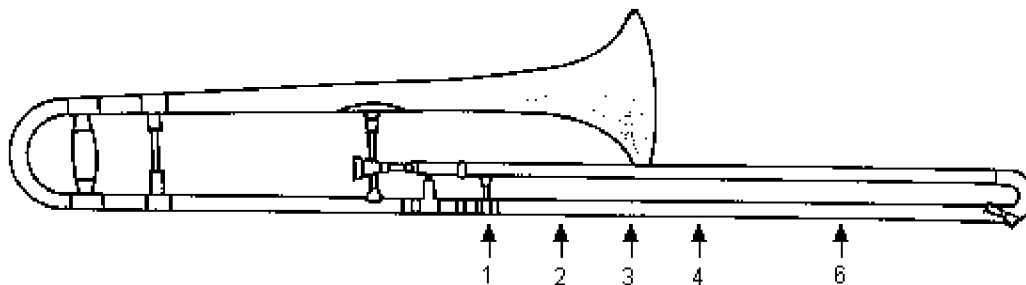
C

T

Musical notation for the note C on a treble clef staff. The note is a whole note. Below the staff is the letter 'T'.

Basic Position Chart

Memorize all notes, slide positions, and staff positions on this page



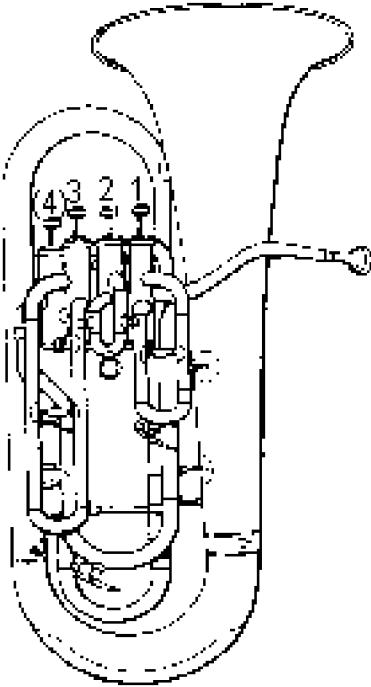
To change slide position, move the *brace* (the piece in your right hand) to the place indicated by the arrow.

**If your trombone has a trigger, use that instead of using 6th position.*

				A	
				2	
	C	D			F
A# Bb			D# Eb		
1	6 *T	4	3		1
	G		A		
		G# Ab			
	4	3	2		1

Basic Fingering Chart

Memorize all notes, fingerings, and staff positions on this page

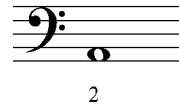


Press down the valves that match the numbers shown

Open means all valves are up.

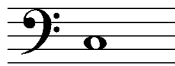
**If your baritone has a 4th valve, use that instead of the 1-3 valve combination.*

A



open

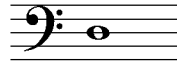
C



1 3

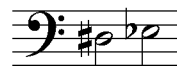
**4*

D



1 2

D# Eb



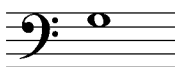
1

F



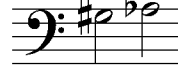
open

G



1 2

G# Ab



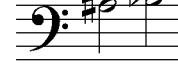
1

A



2

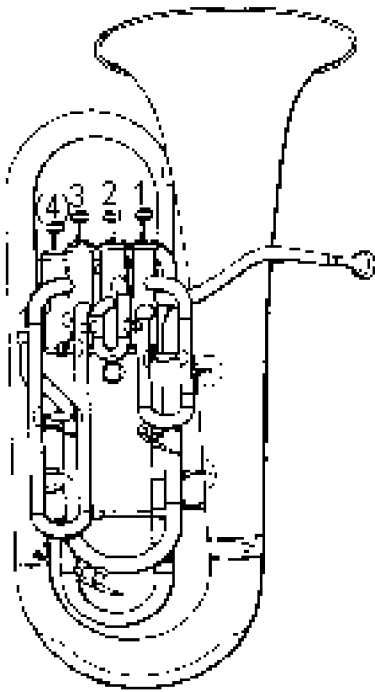
A# Bb



open

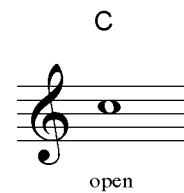
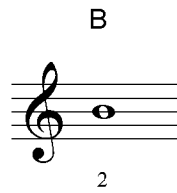
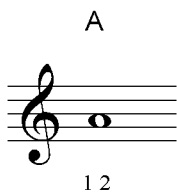
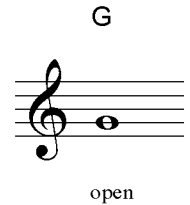
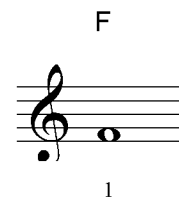
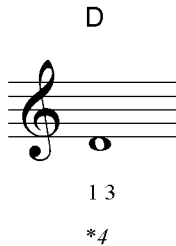
Basic Fingering Chart

Memorize all notes, fingerings, and staff positions on this page

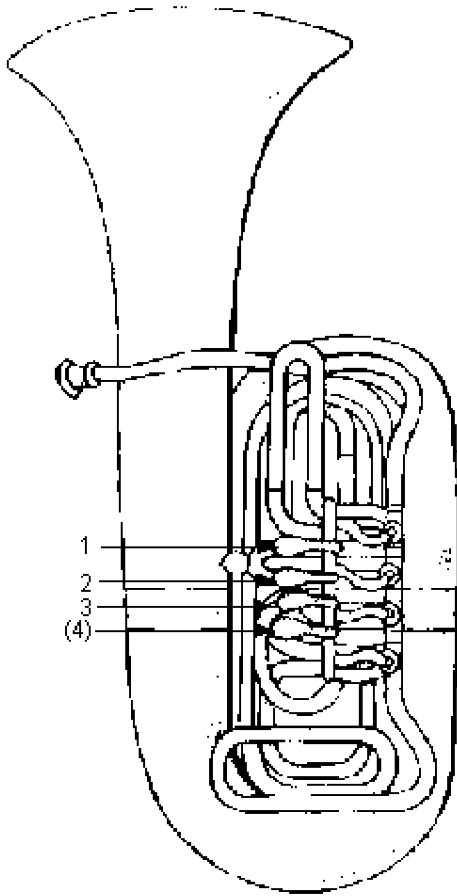


Press down the valves that match the numbers shown
Open means all valves are up.

**If your baritone has a 4th valve, use that instead of the 1-3 valve combination.*



Basic Fingering Chart



Memorize all notes, fingerings, and staff positions on this page

Press down the valves that match the numbers shown

Open means all valves are up.

If your tuba has four valves, use the fourth valve instead of the 1 3 valve combination

A

2

A# Bb

open

C

1 3
(4)

D

1 2

D# Eb

1

F

open

G

1 2

G# Ab

1

A

2

A# Bb

open